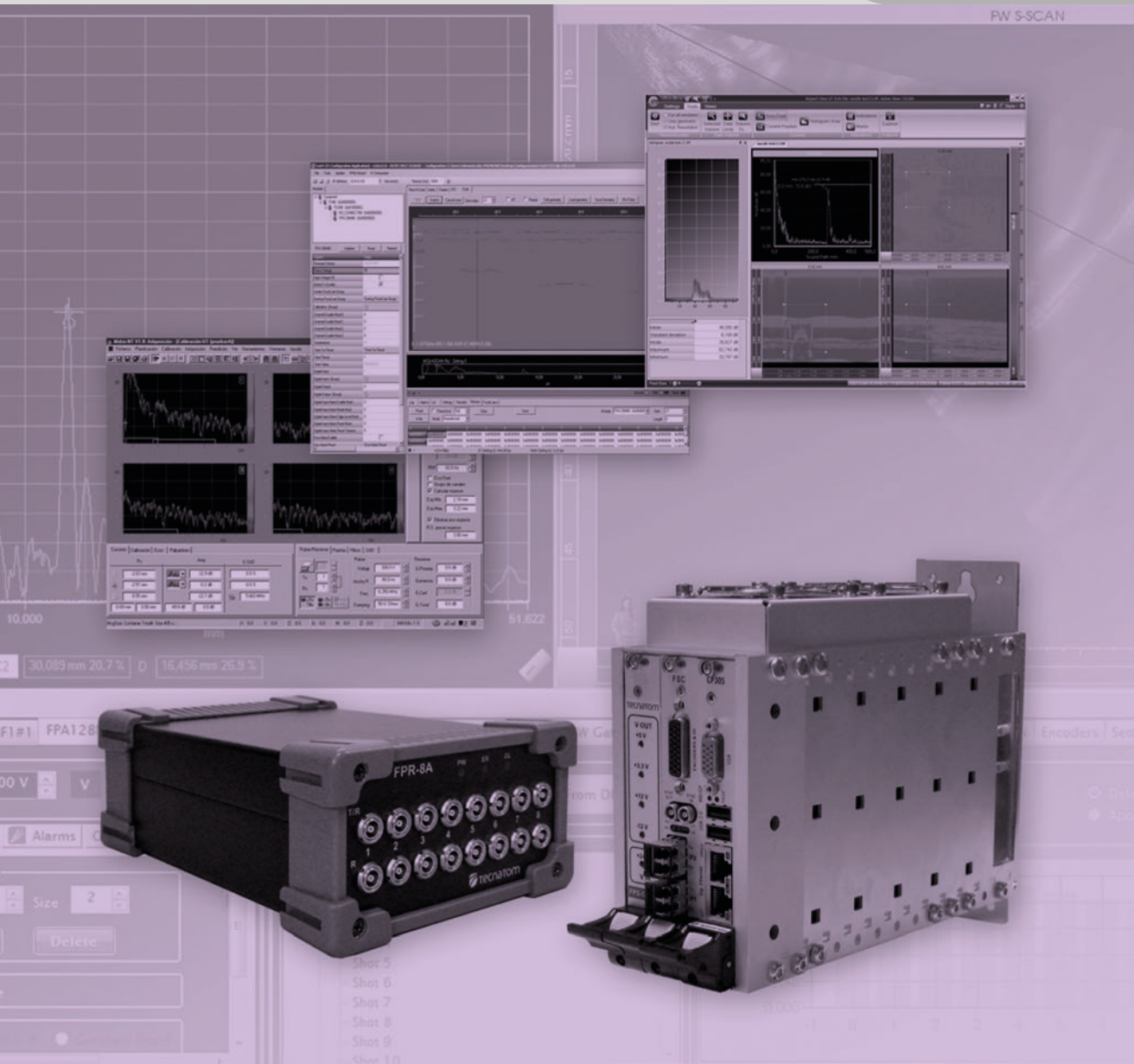


Ready for the future,  
caring for the customer

Ultrasonic Products

# SONIA<sup>®</sup> DRIVER

An API application for  
SONIA system integration in  
third parties UT software



 **tecnatom**  
[www.tecnatom-ndt.com](http://www.tecnatom-ndt.com)

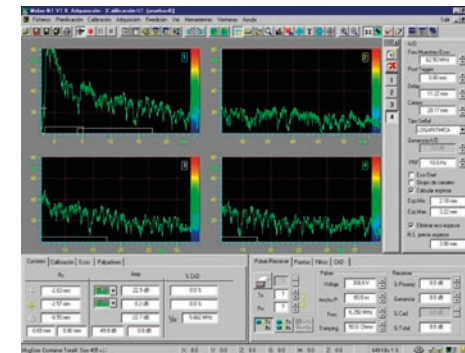
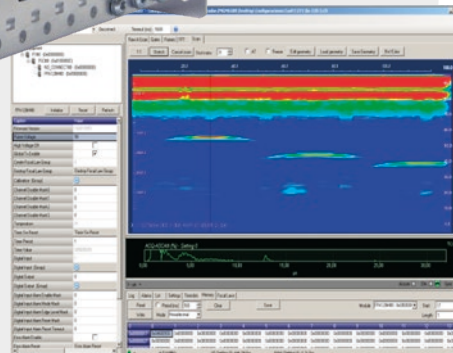
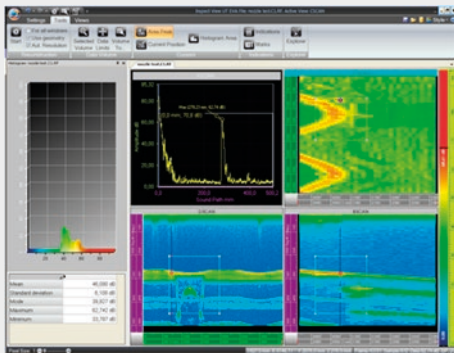
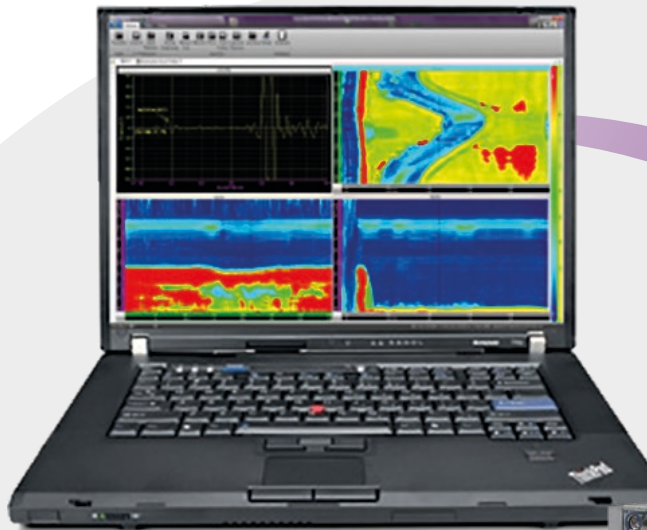


# SONIA<sup>®</sup> DRIVER

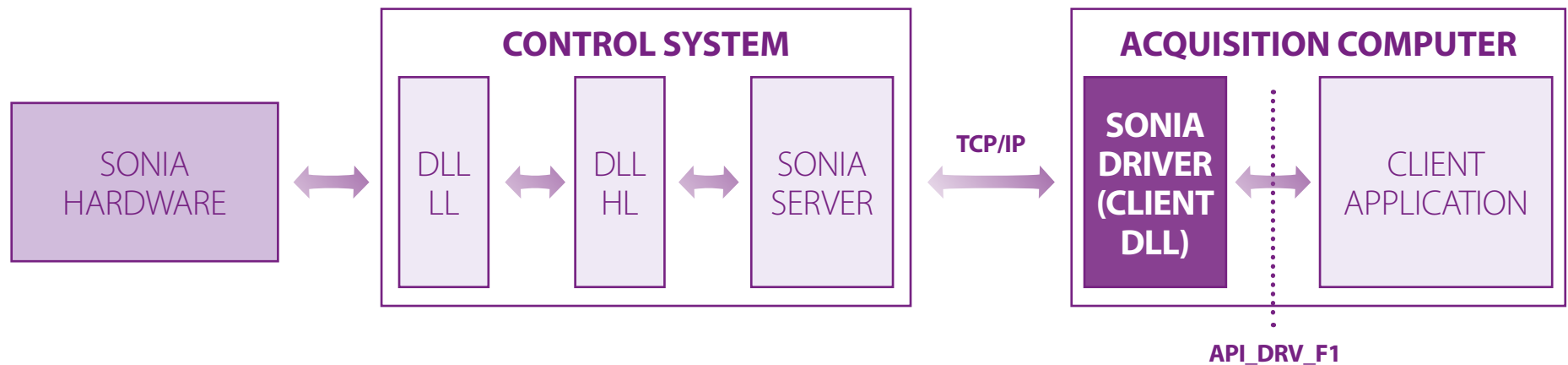
SONIA DRIVER is a dynamic link library (.DLL) that runs in the context of the client application, and whose mission is to serve as a bridge between the client application that runs on the data acquisition PC and Server running on the control system. The API provides communication with the Server Using a set of TCP socket type.

## SONIA DRIVER enables the following actions

- Sending commands to the electronics for configuring, get status, firmware updates, etc...
- Reading data frames, for getting the UT data and encoders information.
- Getting alarms information from the electronics.
- Uploading message information generated by the lower SW levels.



## SONIA DRIVER ARCHITECTURE





Tecnatom S.A.  
Av. Montes de Oca, 1  
28703, San Sebastián de los Reyes / Madrid- Spain

[www.tecnatom-ndt.com](http://www.tecnatom-ndt.com)

